

Configuration of Ubuntu for Notation Software Products with Wine

1. Configure Repository of Wine, Installation of Wine

Wine is not part of the standard distribution of Ubuntu. For Notation Software version 4 a 64 bit machine is mandatorily required.

IMPORTANT:

- On Ubuntu 18.04 LTS and 20.04 LTS
Please install Wine as indicated in <https://wiki.winehq.org/Ubuntu>.
Please select the stable branch with Wine-7.0.
- On Ubuntu 22.04 LTS
Please install Wine as shown in <https://linuxhint.com/install-wine-ubuntu-22-04/>
Please select the stable branch with Wine-7.0.

Notice: for Ubuntu 22.04 LTS with the link above the stable Wine-7.0 build of impish (Ubuntu 21.04 LTS) gets installed because the Wine community does not offer a stable Wine-7.0 for jammy jellyfish (Ubuntu 22.04 LTS). We have certified the stable Wine-7.0 impish build on jammy jellyfish. It works great.

- Please make sure that in upcoming updates of Wine-7.0 does not get automatically updated to higher versions
- In the following the installation guide uses Notation Software version 3. All steps for Notation software 4 are the same.

In addition please install winetricks with the terminal command

```
$ sudo apt-get install winetricks
```

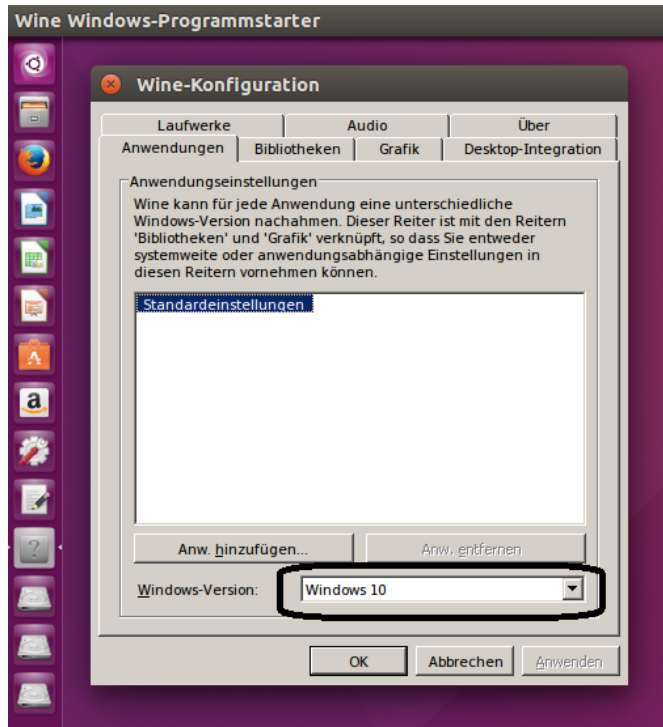
2. Configure Wine

Start application Winetricks through the Terminal.

Select the default Wineprefix

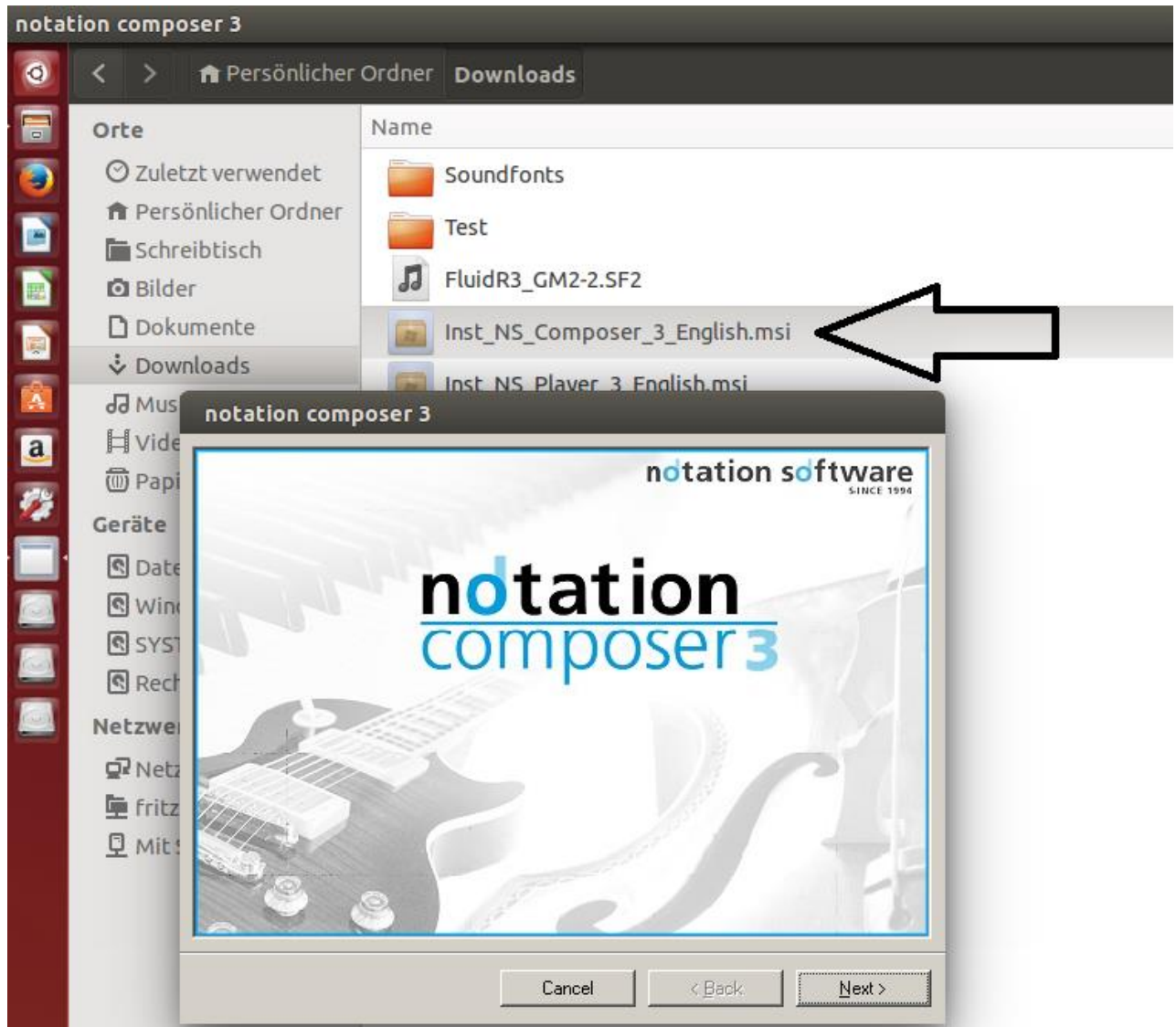
Run winecfg

Select Windows 10



3. Installation of notation composer

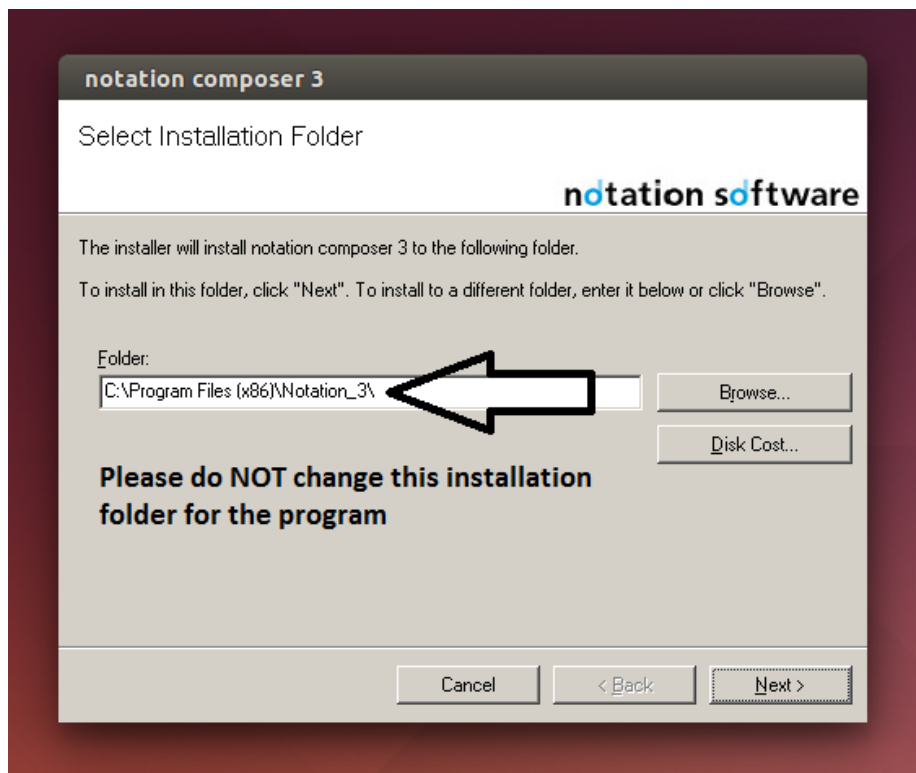
Download Notation Software with your most favourite browser like Firefox. Typically the browser saves the downloaded file in the Downloads folder of the user. Simply double-click to the .msi file and the installation starts.



The installation of notation musician 3 and notation player 3 is similar.

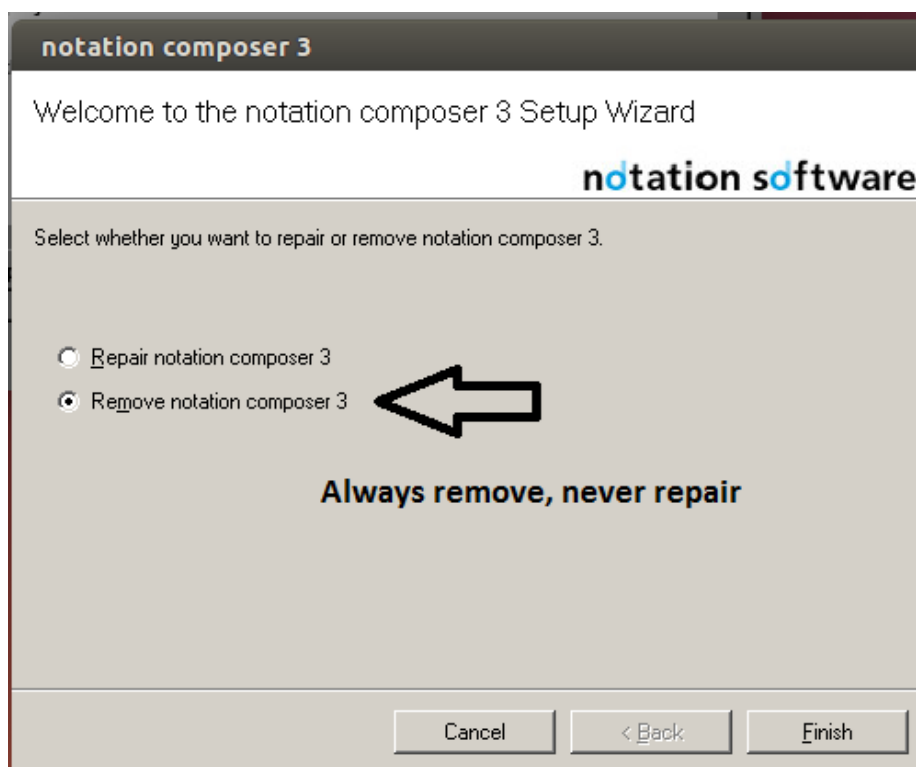
IMPORTANT – when installing Composer / Musician

Due to a bug in Wine please do **NOT** change the default program installation folder.



We have reported this bug to the Wine community and will remove this installation advice when the Wine correction will be available.

If during installation a Repair/Remove window may pop up e.g. for de-installing a former version or a trial version, please **always use Remove**, **never** use Repair



4. How to start Composer, Musician or Player after installation

During installation a desktop icon is created. By double-clicking to this icon the app will start.

5. Save an external backup of the software

During installation of the software an automatic backup is created into to a zip folder. This zip folder is located in the Downloads folder resp. the folder where the installation was started. In addition you can find the backup in the product's installation folder (see Appendix 1).

Please save this zip backup on an external device in case a re-installation needs to be made.

For a re-installation please start with step 3. of this installation guide.

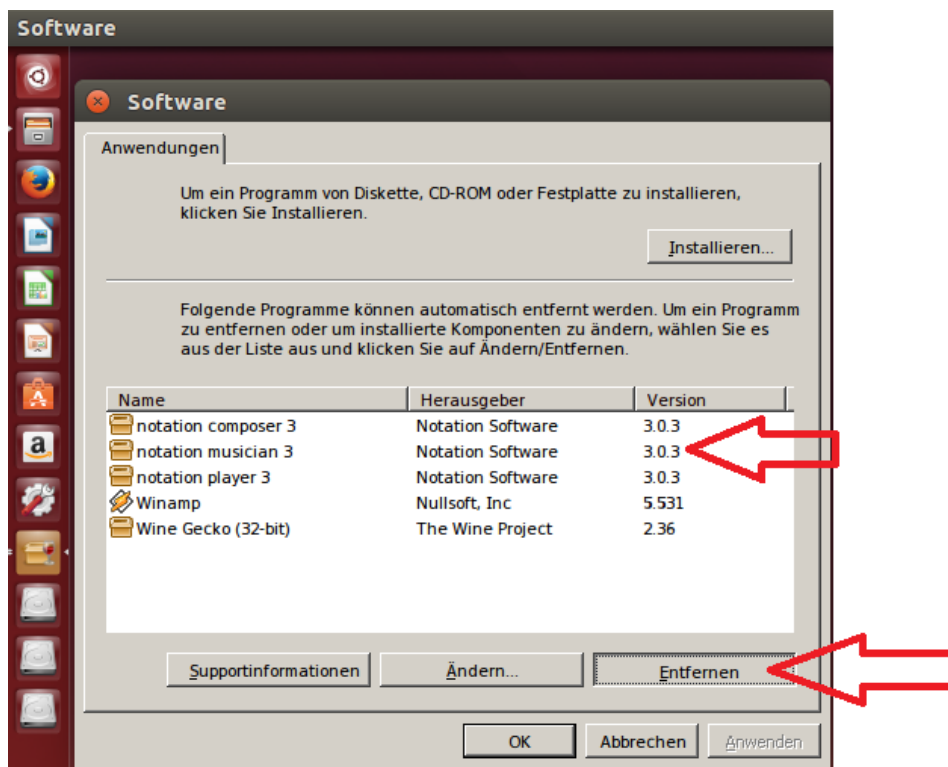
Appendix:

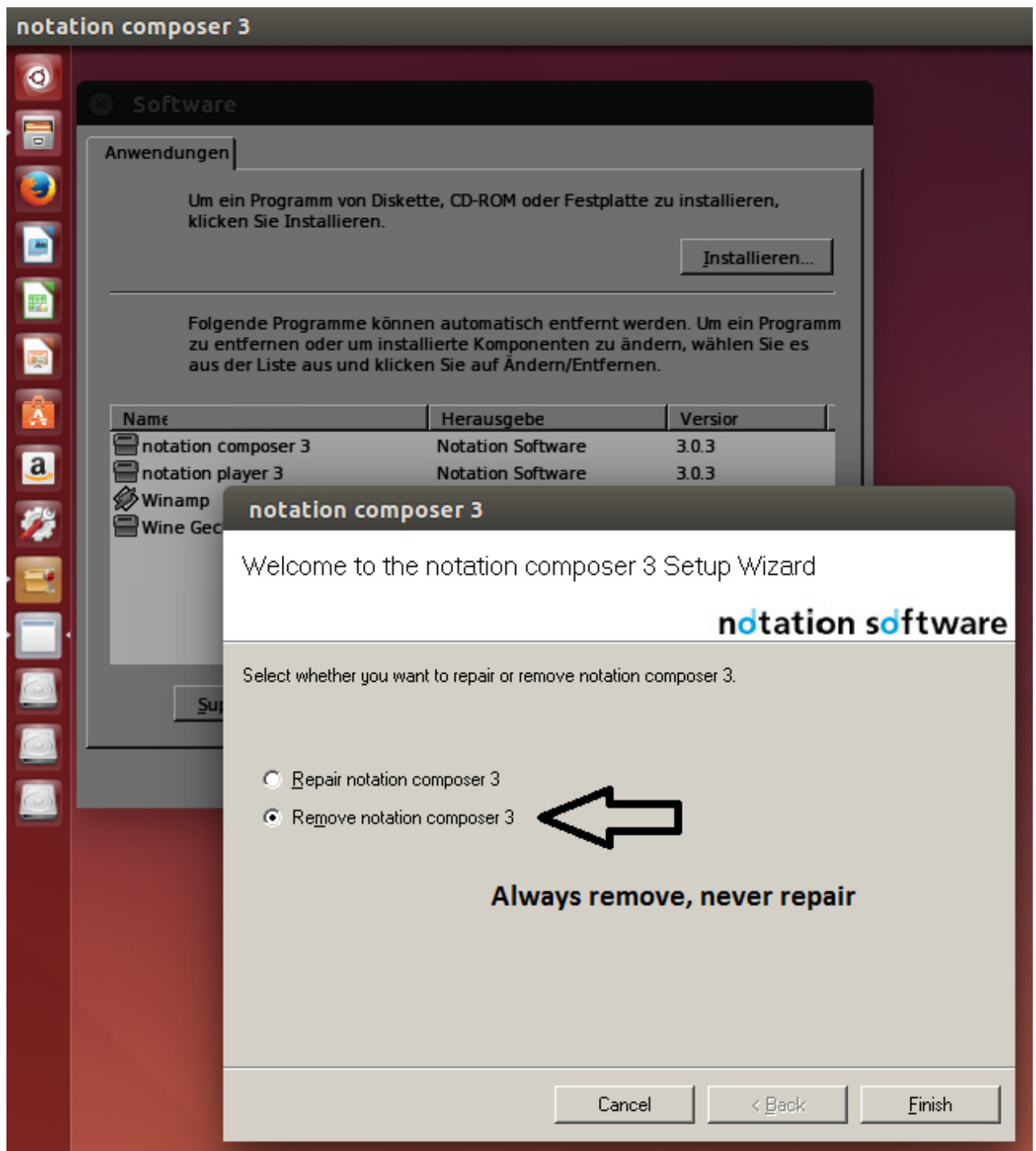
Useful information about the use of Notation Software on Ubuntu

A1. Uninstalling of Notation Software

Run the terminal command

```
$ wine uninstaller
```

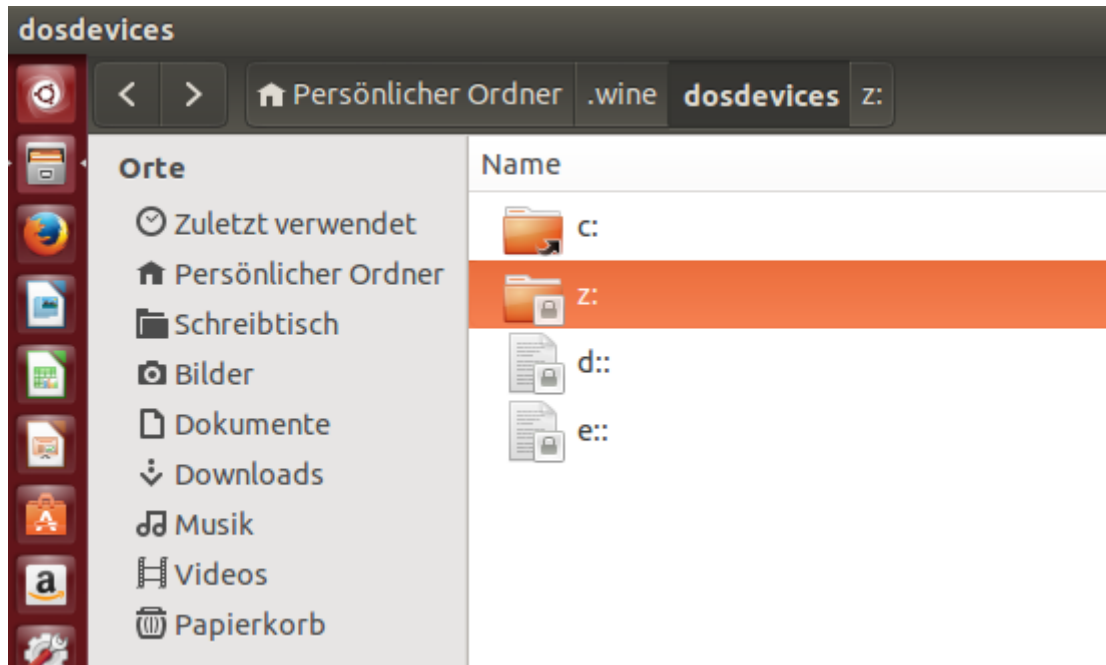




Always use Remove, never use Repair

A2. File structure on Ubuntu

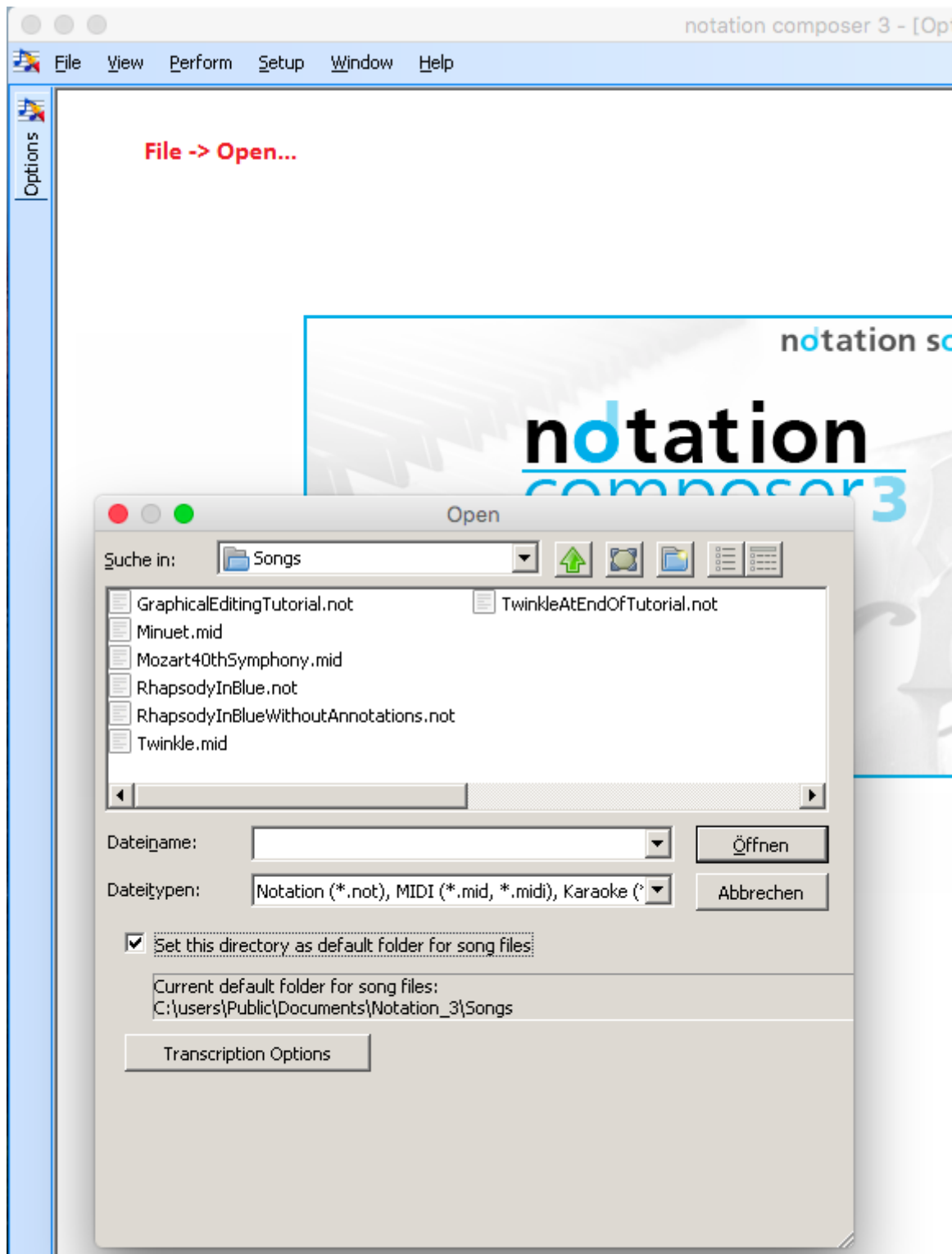
Wine creates the following directory structure. To toggle to the hidden folders like .wine press Crtl H

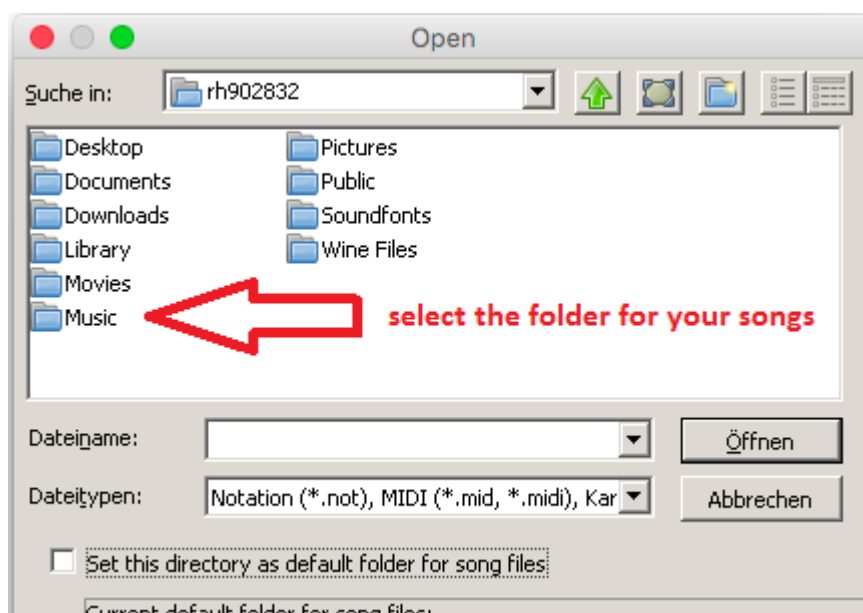
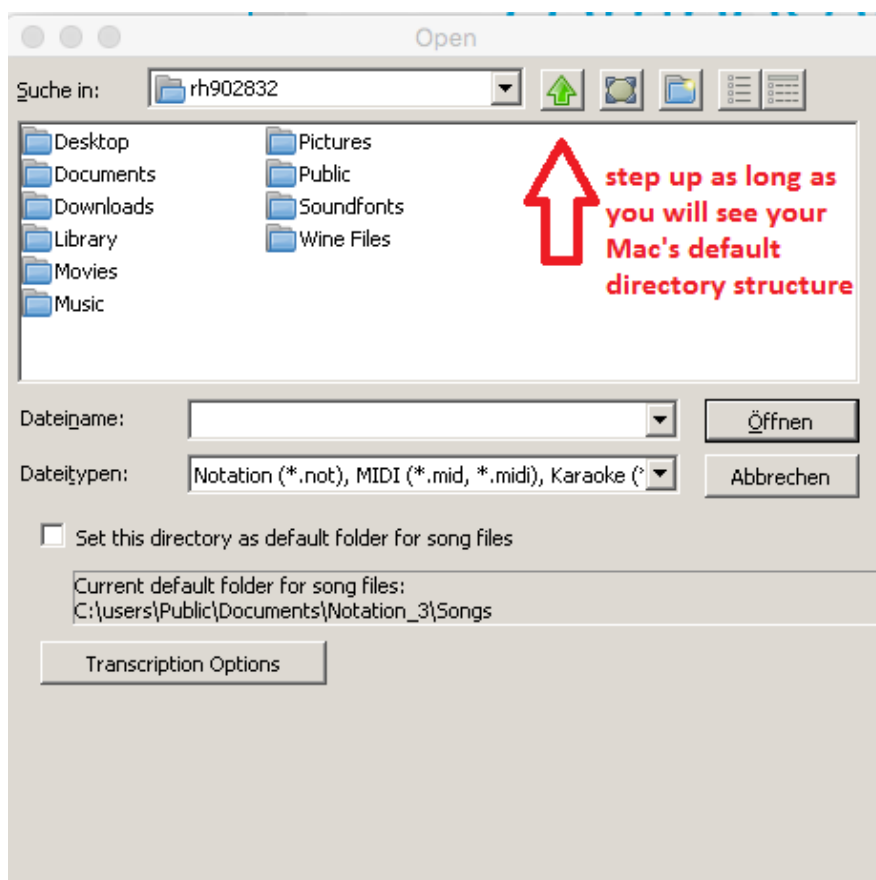


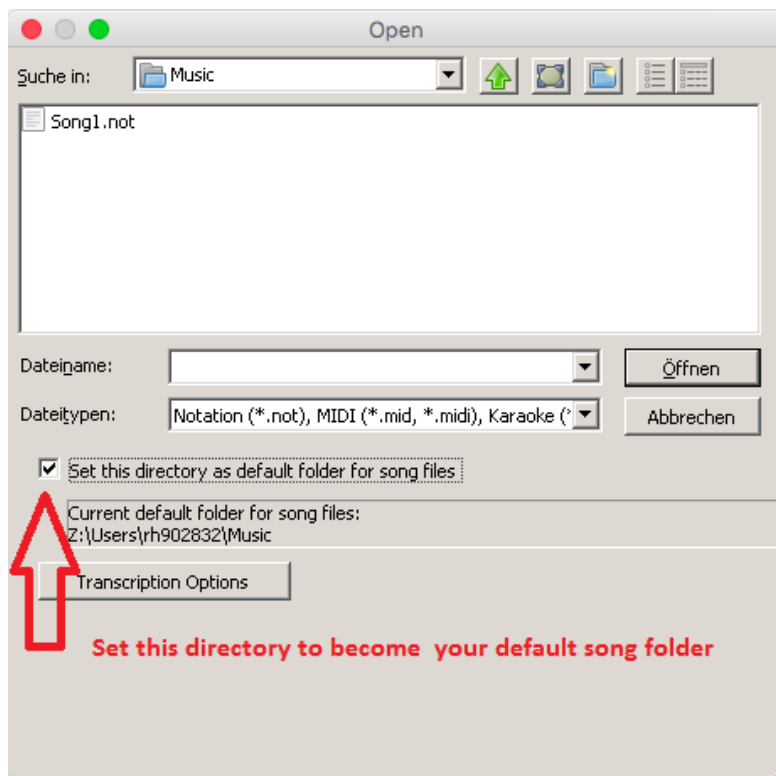
The z: drive points to the user's home directory.

A3. Setting your default song directory

In order to set your default song directory please perform the following steps.

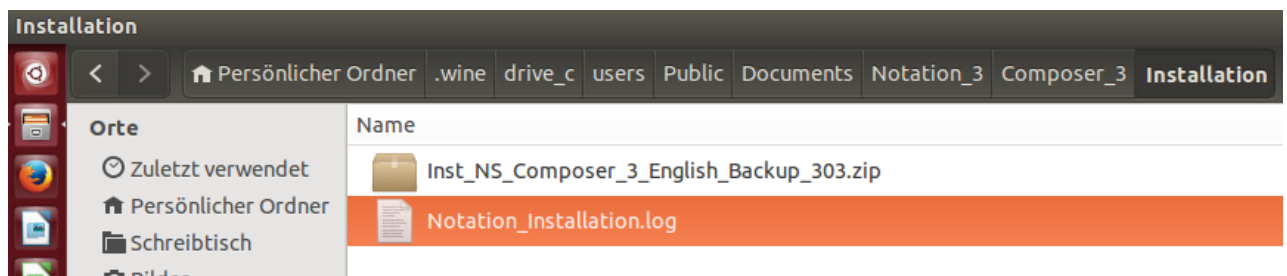






A4. Log files on Ubuntu

notation composer 3



notation musician 3

...the according Musician_3 folder

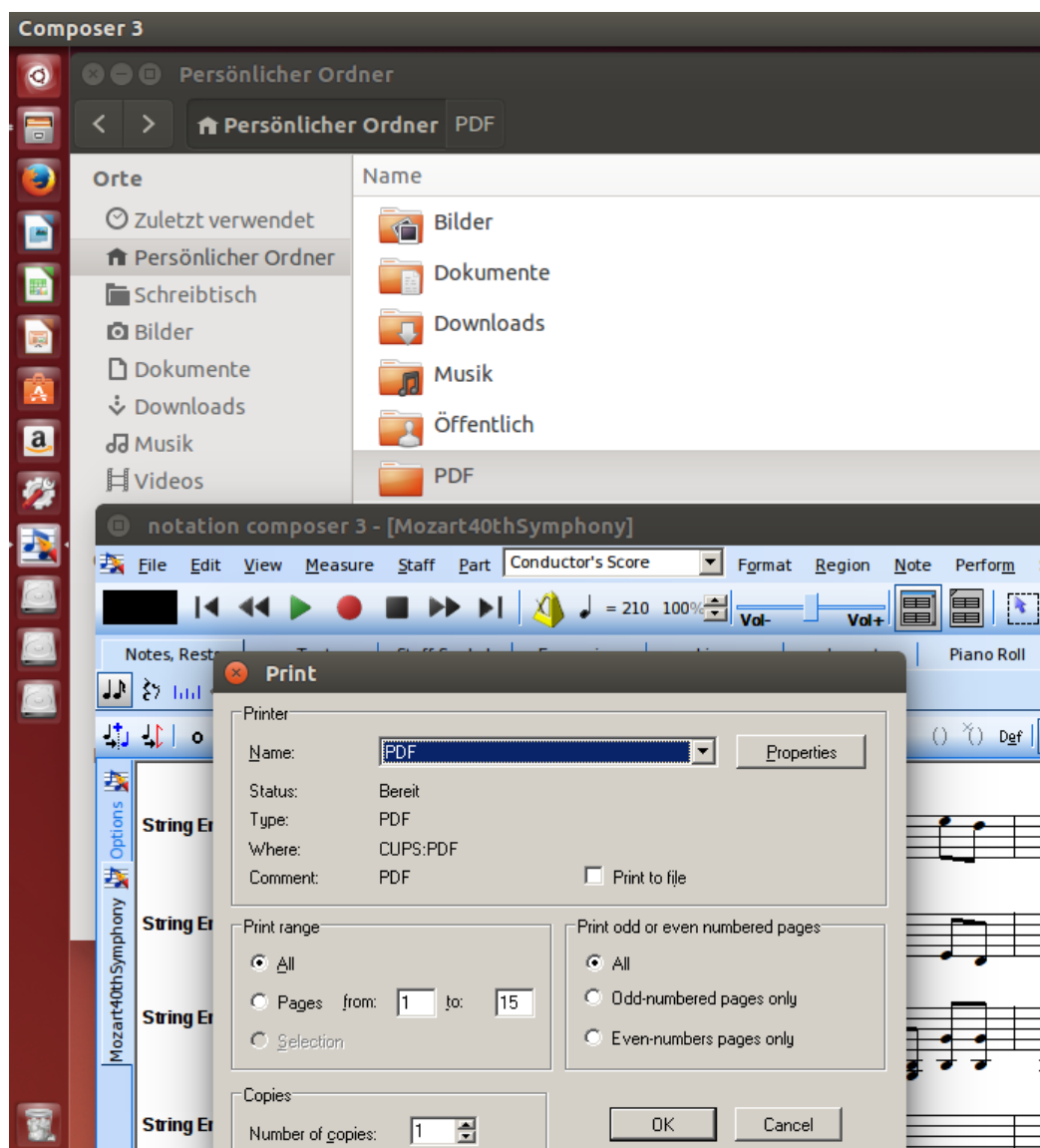
A5. PDF files from Notation Software

Notation Software offers a build-in PDF Export feature. However, you may want to use a public PDF saving feature which can be used through the printing dialog window. For that on Ubuntu we recommend cups-pdf. Ubuntu does not come with a pre-installed PDF printer thus you have to set it up yourself.

Install cups-pdf through the terminal with the command

```
$ sudo apt-get install printer-driver-cups-pdf
```

The cups-pdf printer will show up in the print dialog. The PDF file will be saved in the PDF folder.



A6. Saving songs to an external drive

External drives on Ubuntu are mounted at /media

E.g. an external drive with the name “External Drive” is mounted on

/media/[username]/External Drive

For saving a songs to an external drive please navigate to the external drive as shown in the images below

